

**PRELIMINARY FLOOR PLAN**  
SCALE: 1/8" = 1'-0"

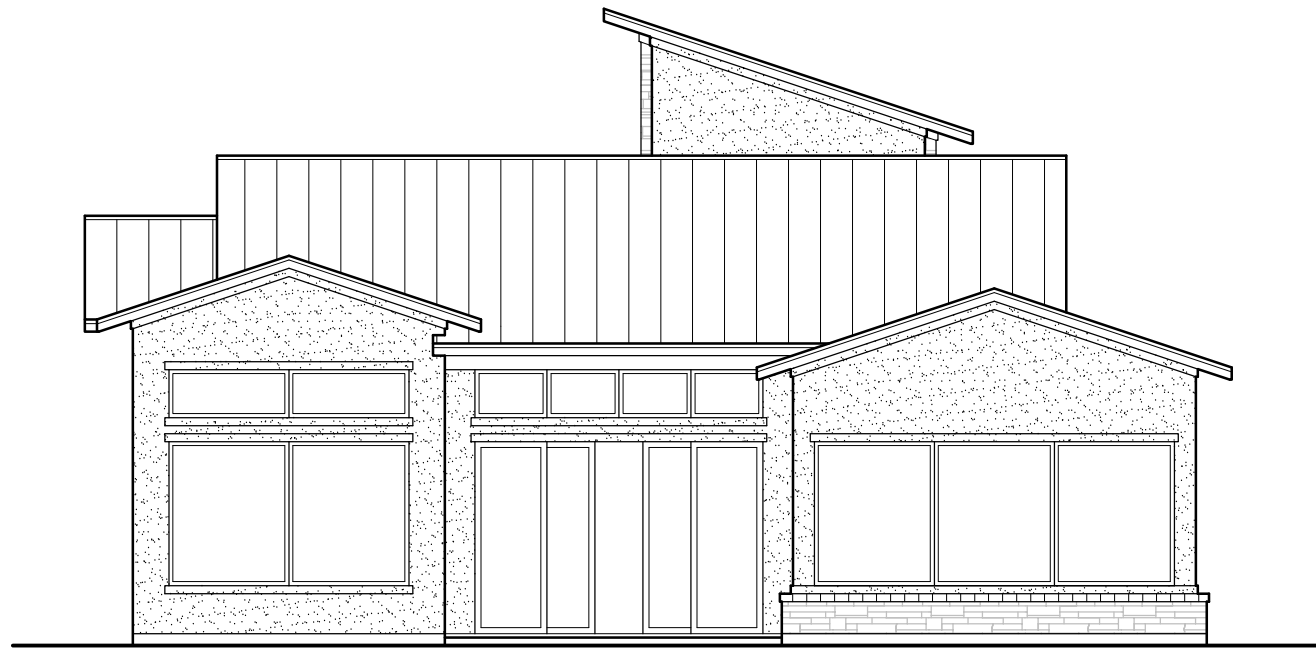
SQUARE FOOTAGES	
First Floor	2901
Second Floor	0
Total Living Area	2901
Garage	954
Porch	71
Patio	268
Total Under Roof	4194

ISSUE LOG	
DATE	DESCRIPTION
03/21/24	PRELIMINARY-1
03/21/24	PRELIMINARY-2
03/21/24	PRELIMINARY-3

SCALE	1/8" = 1'-0"
DATE	03/21/2024
SHEET	A1.01

**GOLDEN BEAR LOT 16  
HORSESHOE BAY, TEXAS  
LLANO COUNTY, TEXAS**

COPYRIGHT, MIDTOWN ARCHITECTS, LLC - 2024  
THIS PLAN IS INTENDED TO PROVIDE THE BASIC CONSTRUCTION INFORMATION NECESSARY TO SUBMITTAL TO THE LOCAL PERMITTING AGENCY. IT IS NOT TO BE USED FOR ANY OTHER PURPOSES WITHOUT THE WRITTEN CONSENT OF MIDTOWN ARCHITECTS, LLC. THE ARCHITECT ASSUMES NO LIABILITY FOR ANY ERRORS OR OMISSIONS IN THIS PLAN. THE ARCHITECT IS NOT RESPONSIBLE FOR ANY CONSTRUCTION DEFECTS OR DAMAGES TO THE PROPERTY OR PERSONS. THE ARCHITECT IS NOT A CONTRACTOR AND DOES NOT PROVIDE CONTRACT ADMINISTRATION SERVICES. THE ARCHITECT IS NOT A REALTOR AND DOES NOT PROVIDE REAL ESTATE SERVICES. THE ARCHITECT IS NOT A LANDSCAPE ARCHITECT AND DOES NOT PROVIDE LANDSCAPE ARCHITECTURE SERVICES. THE ARCHITECT IS NOT A STRUCTURAL ENGINEER AND DOES NOT PROVIDE STRUCTURAL ENGINEERING SERVICES. THE ARCHITECT IS NOT A MECHANICAL ENGINEER AND DOES NOT PROVIDE MECHANICAL ENGINEERING SERVICES. THE ARCHITECT IS NOT A ELECTRICAL ENGINEER AND DOES NOT PROVIDE ELECTRICAL ENGINEERING SERVICES. THE ARCHITECT IS NOT A PLUMBING ENGINEER AND DOES NOT PROVIDE PLUMBING ENGINEERING SERVICES. THE ARCHITECT IS NOT A CIVIL ENGINEER AND DOES NOT PROVIDE CIVIL ENGINEERING SERVICES. THE ARCHITECT IS NOT A GEOTECHNICAL ENGINEER AND DOES NOT PROVIDE GEOTECHNICAL ENGINEERING SERVICES. THE ARCHITECT IS NOT A ENVIRONMENTAL ENGINEER AND DOES NOT PROVIDE ENVIRONMENTAL ENGINEERING SERVICES. THE ARCHITECT IS NOT A TRANSPORTATION ENGINEER AND DOES NOT PROVIDE TRANSPORTATION ENGINEERING SERVICES. THE ARCHITECT IS NOT A AEROSPACE ENGINEER AND DOES NOT PROVIDE AEROSPACE ENGINEERING SERVICES. THE ARCHITECT IS NOT A CHEMICAL ENGINEER AND DOES NOT PROVIDE CHEMICAL ENGINEERING SERVICES. THE ARCHITECT IS NOT A METALLURGICAL ENGINEER AND DOES NOT PROVIDE METALLURGICAL ENGINEERING SERVICES. THE ARCHITECT IS NOT A INDUSTRIAL ENGINEER AND DOES NOT PROVIDE INDUSTRIAL ENGINEERING SERVICES. THE ARCHITECT IS NOT A AGRICULTURAL ENGINEER AND DOES NOT PROVIDE AGRICULTURAL ENGINEERING SERVICES. THE ARCHITECT IS NOT A MARINE ENGINEER AND DOES NOT PROVIDE MARINE ENGINEERING SERVICES. THE ARCHITECT IS NOT A POLYMER ENGINEER AND DOES NOT PROVIDE POLYMER ENGINEERING SERVICES. THE ARCHITECT IS NOT A FOOD SCIENCE ENGINEER AND DOES NOT PROVIDE FOOD SCIENCE ENGINEERING SERVICES. THE ARCHITECT IS NOT A TEXTILE ENGINEER AND DOES NOT PROVIDE TEXTILE ENGINEERING SERVICES. THE ARCHITECT IS NOT A FIBER ENGINEER AND DOES NOT PROVIDE FIBER ENGINEERING SERVICES. THE ARCHITECT IS NOT A PAPER ENGINEER AND DOES NOT PROVIDE PAPER ENGINEERING SERVICES. THE ARCHITECT IS NOT A CHEMICAL ENGINEER AND DOES NOT PROVIDE CHEMICAL ENGINEERING SERVICES. THE ARCHITECT IS NOT A METALLURGICAL ENGINEER AND DOES NOT PROVIDE METALLURGICAL ENGINEERING SERVICES. THE ARCHITECT IS NOT A INDUSTRIAL ENGINEER AND DOES NOT PROVIDE INDUSTRIAL ENGINEERING SERVICES. THE ARCHITECT IS NOT A AGRICULTURAL ENGINEER AND DOES NOT PROVIDE AGRICULTURAL ENGINEERING SERVICES. THE ARCHITECT IS NOT A MARINE ENGINEER AND DOES NOT PROVIDE MARINE ENGINEERING SERVICES. THE ARCHITECT IS NOT A POLYMER ENGINEER AND DOES NOT PROVIDE POLYMER ENGINEERING SERVICES. THE ARCHITECT IS NOT A FOOD SCIENCE ENGINEER AND DOES NOT PROVIDE FOOD SCIENCE ENGINEERING SERVICES. THE ARCHITECT IS NOT A TEXTILE ENGINEER AND DOES NOT PROVIDE TEXTILE ENGINEERING SERVICES. THE ARCHITECT IS NOT A FIBER ENGINEER AND DOES NOT PROVIDE FIBER ENGINEERING SERVICES. THE ARCHITECT IS NOT A PAPER ENGINEER AND DOES NOT PROVIDE PAPER ENGINEERING SERVICES.



REAR ELEVATION

SCALE: 1/8" = 1'-0"

LOT 16



FRONT ELEVATION

SCALE: 1/8" = 1'-0"

LOT 16

GOLDEN BEAR LOT 16  
HORSESHOE BAY, TEXAS  
LLANO COUNTY, TEXAS

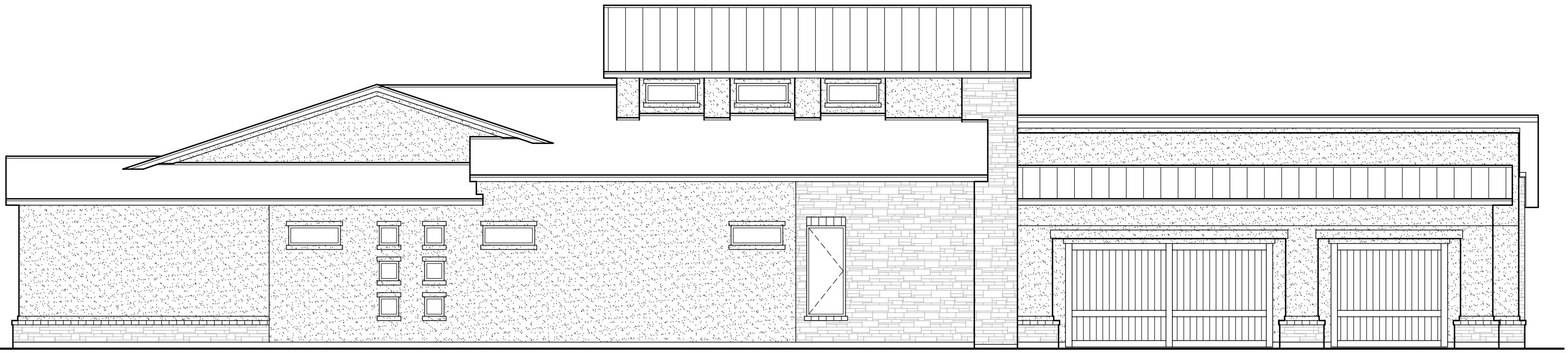
ISSUE LOG	
DATE	DESCRIPTION
03-21-24	PRELIMINARY-1
03-21-24	PRELIMINARY-2
03-21-24	PRELIMINARY-3

SCALE  
1/8" = 1'-0"

DATE  
03/21/2024

SHEET  
A1.02

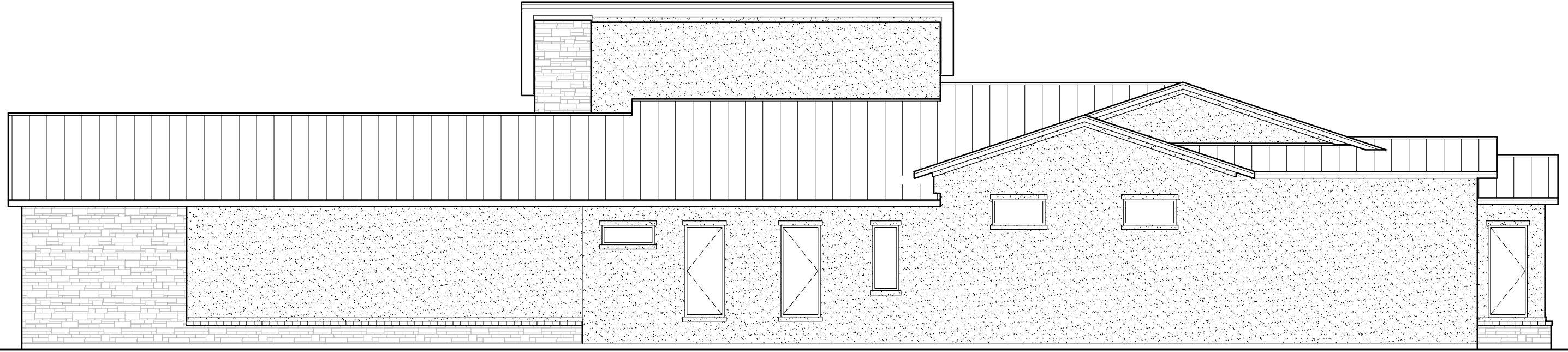
COPYRIGHT: MIDTOWN ARCHITECTS, LLC - 2024  
THIS PLAN IS INTENDED TO PROVIDE THE BASIC CONSTRUCTION INFORMATION NECESSARY TO SUBSTANTIALLY COMPLETE THIS PROJECT. IT IS NOT INTENDED TO BE USED AS A CONTRACT DOCUMENT. ANY DISCREPANCY, ERROR, OMISSION, OR CONFLICT SHALL BE THE RESPONSIBILITY OF THE CONTRACTOR. THE CONTRACTOR SHALL VERIFY ALL DIMENSIONS, CONDITIONS, AND REQUIREMENTS OF ALL APPLICABLE CODES, ORDINANCES, REGULATIONS, AND SPECIFICATIONS. THE CONTRACTOR SHALL BE RESPONSIBLE FOR OBTAINING ALL NECESSARY PERMITS AND APPROVALS. THIS PLAN AND ALL ELEMENTS THEREOF SHALL BE CONSIDERED VOID AND INVALID WITHOUT THE SIGNATURE AND SEAL OF THE ARCHITECT. THE ARCHITECT SHALL BE RESPONSIBLE FOR THE ACCURACY AND COMPLETENESS OF THIS PLAN AND ALL ELEMENTS THEREOF. THE ARCHITECT SHALL BE RESPONSIBLE FOR THE PROTECTION OF THIS PLAN AND ALL ELEMENTS THEREOF FROM UNAUTHORIZED REPRODUCTION OR ALTERATION. THE ARCHITECT SHALL BE RESPONSIBLE FOR THE PROTECTION OF THIS PLAN AND ALL ELEMENTS THEREOF FROM UNAUTHORIZED REPRODUCTION OR ALTERATION.



LEFT SIDE ELEVATION

LOT 16

SCALE: 1/8" = 1'-0"



RIGHT SIDE ELEVATION

LOT 16

SCALE: 1/8" = 1'-0"

COPYRIGHT, MIDTOWN ARCHITECTS, LLC - 2024  
 THESE PLANS ARE INTENDED TO PROVIDE THE BASIC CONSTRUCTION INFORMATION NECESSARY TO REPRESENTATIVELY COMPLETE THIS PROJECT. THE ARCHITECT ASSUMES NO RESPONSIBILITY FOR THE ACCURACY OF THE INFORMATION PROVIDED IN THESE PLANS. THE ARCHITECT HAS CONDUCTED VISUAL GENERAL VERIFICATION OF THE INFORMATION PROVIDED IN THESE PLANS AND HAS FOUND IT TO BE REASONABLY ACCURATE. THE ARCHITECT HAS NOT CONDUCTED ANY SURVEYING, ENGINEERING, OR OTHER PROFESSIONAL SERVICES. THE ARCHITECT HAS NOT CONDUCTED ANY INVESTIGATION OF THE INFORMATION PROVIDED IN THESE PLANS AND HAS NOT CONDUCTED ANY VISUAL GENERAL VERIFICATION OF THE INFORMATION PROVIDED IN THESE PLANS. THE ARCHITECT HAS NOT CONDUCTED ANY INVESTIGATION OF THE INFORMATION PROVIDED IN THESE PLANS AND HAS NOT CONDUCTED ANY VISUAL GENERAL VERIFICATION OF THE INFORMATION PROVIDED IN THESE PLANS. THE ARCHITECT HAS NOT CONDUCTED ANY INVESTIGATION OF THE INFORMATION PROVIDED IN THESE PLANS AND HAS NOT CONDUCTED ANY VISUAL GENERAL VERIFICATION OF THE INFORMATION PROVIDED IN THESE PLANS.

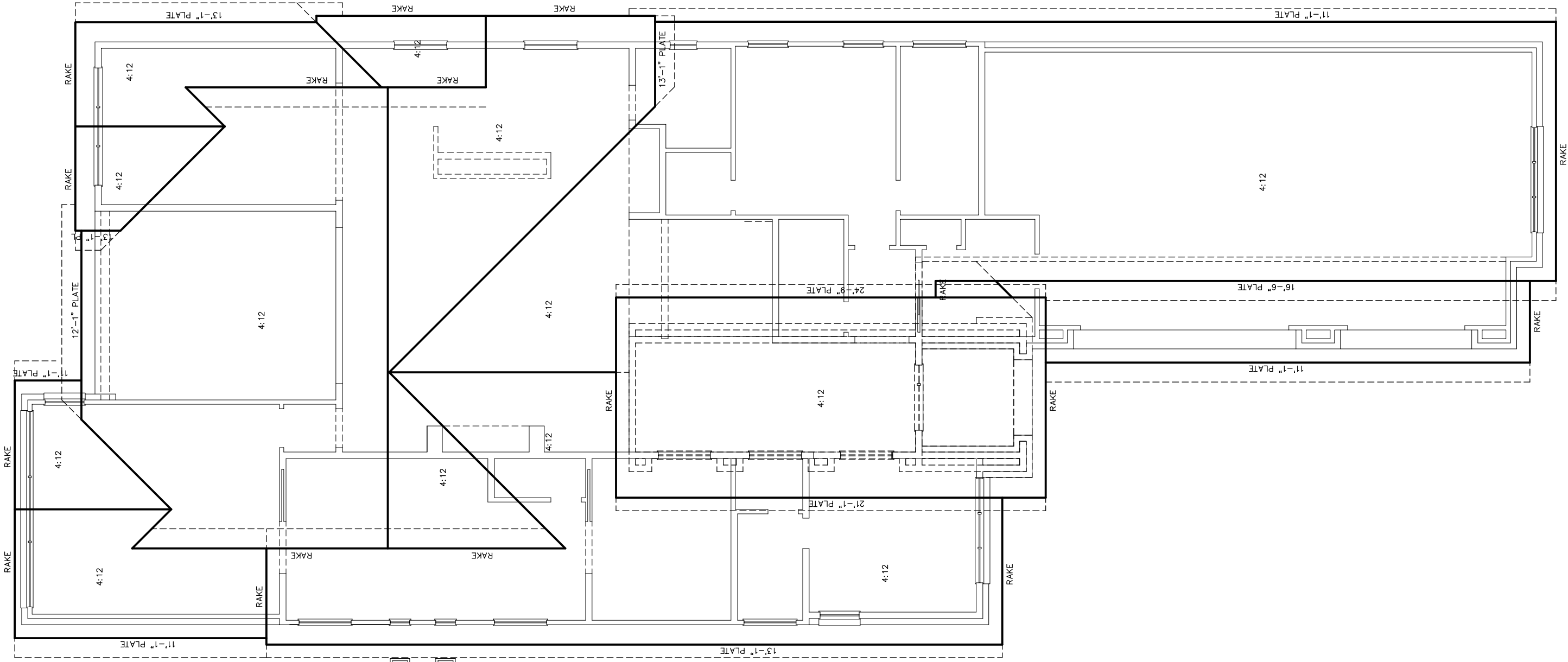
GOLDEN BEAR LOT 16  
 HORSESHOE BAY, TEXAS  
 LLANO COUNTY, TEXAS

ISSUE LOG	
DATE	DESCRIPTION
02-21-24	PRELIMINARY-1
02-21-24	PRELIMINARY-2
02-21-24	PRELIMINARY-3

SCALE  
 1/8" = 1'-0"

DATE  
 03/21/2024

SHEET  
 A1.03



**PRELIMINARY ROOF PLAN**

SCALE: 1/8" = 1'-0"



COPYRIGHT, MIDTOWN ARCHITECTS, LLC - 2024  
 THESE PLANS ARE INTENDED TO PROVIDE THE BASIC CONSTRUCTION INFORMATION NECESSARY TO SUBSTITUTELY COMPLETE THIS PROJECT. THE CONTRACTOR SHALL BE RESPONSIBLE FOR OBTAINING ALL NECESSARY PERMITS AND APPROVALS FROM THE LOCAL, STATE, AND FEDERAL AUTHORITIES. THE CONTRACTOR SHALL BE RESPONSIBLE FOR VERIFYING THE ACCURACY OF ALL INFORMATION PROVIDED HEREON. THE CONTRACTOR SHALL BE RESPONSIBLE FOR OBTAINING ALL NECESSARY PERMITS AND APPROVALS FROM THE LOCAL, STATE, AND FEDERAL AUTHORITIES. THE CONTRACTOR SHALL BE RESPONSIBLE FOR VERIFYING THE ACCURACY OF ALL INFORMATION PROVIDED HEREON. THE CONTRACTOR SHALL BE RESPONSIBLE FOR OBTAINING ALL NECESSARY PERMITS AND APPROVALS FROM THE LOCAL, STATE, AND FEDERAL AUTHORITIES. THE CONTRACTOR SHALL BE RESPONSIBLE FOR VERIFYING THE ACCURACY OF ALL INFORMATION PROVIDED HEREON.

**GOLDEN BEAR LOT 16  
 HORSESHOE BAY, TEXAS  
 LLANO COUNTY, TEXAS**

ISSUE LOG	
DATE	DESCRIPTION
03/21/24	PRELIMINARY.1
03/21/24	PRELIMINARY.2
03/21/24	PRELIMINARY.3

SCALE  
1/8" = 1'-0"

DATE  
03/21/2024

SHEET  
A1.04